



The best air anywhere.



HEATING AND COOLING SOLUTIONS

VRV-S RESIDENTIAL SYSTEMS



With the emerging trend towards double storey homes on smaller blocks, the compact size and horizontal discharge design of Daikin's VRV-S multi split air conditioning system makes it the ideal solution for the contemporary home.



VRV-S

BRINGING INNOVATION TO YOUR HOME



INDIVIDUAL COMFORT

Each indoor unit can be individually controlled, scheduled and set to the desired room temperature ensuring optimal comfort for all occupants in the household at anytime.⁴



COMPACT FOOTPRINT

VRV-S is available in a range of capacities from 9kW up to 24kW whilst maintaining a compact installation footprint with long piping runs of up to 100m¹. This allows you to place the outdoor unit out of sight and not compromise the external appearance of your home.



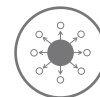
INTELLIGENT COMFORT

Wall mounted indoor units feature a human presence sensor that ensures draught free comfort² and automatically enables energy saving operations when the room is unoccupied.



WHISPER QUIET

VRV-S is not just compact in size but also quiet in operations, featuring a night time quiet mode that reduces the outdoor unit noise level down to 43dB(A)³ for minimal impact to the neighbours.



ULTIMATE VERSATILITY

As many as 14 indoor units can be connected to a single outdoor unit combined with a wide selection of indoor units ranging from wall mounted, floor standing, ducted, cassettes and ceiling suspended units, Daikin VRV-S series is truly a versatile system.



Note:

1. Applies to 16.0kW to 24.0kW models
2. Draught prevention is only applicable to wall mounted units
3. Applies to 11.2kW model, noise levels for other models may vary
4. User can select the unit to operate in either cooling or heating mode, not both cooling and heating simultaneously



TECHNOLOGY

1. SAW EDGE FAN BLADE

The addition of a saw tooth edge at the rear of the blade smooths airflow over the blade surface, reducing turbulence which in turn results in a quieter, more efficient means of delivering comfort to your home.

2. COMPRESSOR

Daikin's swing and scroll compressors are quieter and more efficient than conventional compressors, thanks to their high pressure dome construction and usage of high pressure lubrication oil.

3. RELUCTANCE DC MOTOR

All VRV IV-S compressors are equipped with Reluctance DC Motors. These motors utilise the magnetic torque or neodymium magnets in conjunction with reluctance torque, resulting in more energy efficient operation.

4. INVERTER TECHNOLOGY

The Inverter PCB works like the accelerator of a car, gently increasing or decreasing power. This ensures your desired temperature is reached quicker and steadily maintained without fluctuations.

NIGHT TIME QUIET MODE

Once enabled, this mode reduces the operational sound level of the condenser during night time with minimal sacrifice to indoor comfort.

MODE 1: AUTOMATIC MODE

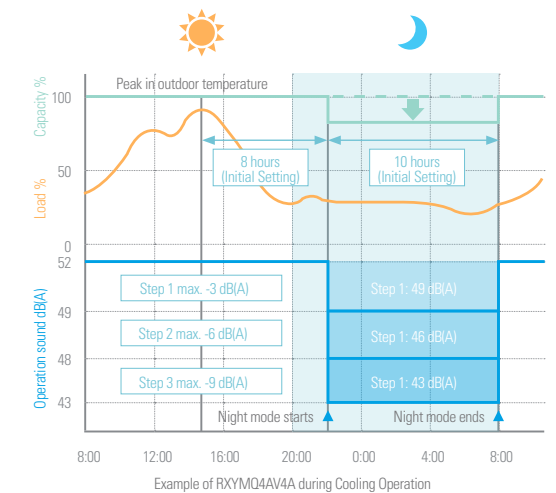
Night mode will initiate 8 hours after peak temperature and last another 10 hours before resuming to normal operation.

MODE 2: MANUAL MODE

Starting time and ending time can be input. (PCB adaptor required, speak to dealer for more info)

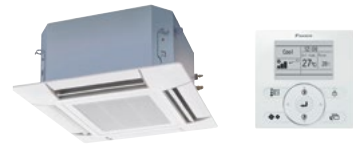
MODE 3: COMBINED MODE

Combination of modes 1 and 2 can be used.



PRODUCT RANGE

Indoor Units



Compact Cassette

Model Name	FFQ-B
Capacity Range	2.5-6.0kW
Application	<ul style="list-style-type: none"> - 4 way airflow delivers even temperatures over open plan areas - Quiet operations in a compact size for easy installation



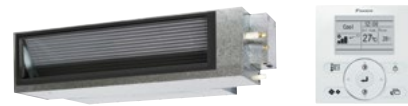
Bulkhead

Model Name	CDXS-EA, FDXS-C
Capacity Range	2.5-6.0kW
Application	<ul style="list-style-type: none"> - Low height unit ideal for installation into drop ceilings - Minimal impact on the internal aesthetics of the room (only air diffusers visible)



Ceiling Mounted Built-in

Model Name	FXSQ-P
Capacity Range	2.2-16.0kW
Application	<ul style="list-style-type: none"> - Wide capacities available in a compact size with 245mm height, ideal for open plan areas and installation in tight ceiling spaces - Airflow is automatically adjusted to deliver superior comfort



Ceiling Concealed Ducted

Model Name	FXDYQ-MA, FXMQ-P
Capacity Range	8.8-28.0kW
Application	<ul style="list-style-type: none"> - High external static pressures up to 250Pa enables flexible duct design - Powerful supply air fan delivers higher airflow to suit the requirements of larger homes



Designer Wall Mounted (Zena)

Model Name	CTXG-P
Capacity Range	2.5-5.0kW
Application	<ul style="list-style-type: none"> - Designer series to suit small to mid sized contemporary rooms - Available in silver or pure white matte finish - 2 Area Intelligent Eye for draught free comfort and energy saving operations



Floor Standing

Model Name	FVXS-K
Capacity Range	2.5-5.0kW
Application	<ul style="list-style-type: none"> - Compact size with a 600mm height, ideal for placement under a window sill, or semi-recessed into an unused fireplace - Dual duct discharge offers superior heating performance



Wall Mounted

Model Name	FTXS-K
Capacity Range	2.5-7.1kW
Application	<ul style="list-style-type: none"> - Wide range up to 7.1kW, suitable for larger rooms - Quiet operations with the Intelligent Eye feature for energy savings operations

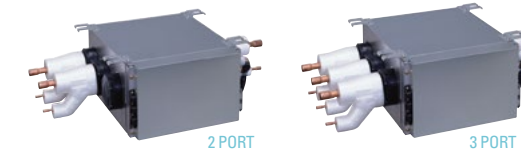


Floor/Ceiling Suspended Dual

Model Name	FLXS-B(G)
Capacity Range	2.5-6.0kW
Application	<ul style="list-style-type: none"> - Flexible design, suitable for ceiling suspended or floor standing installation - Contemporary design of unit blends seamlessly into a modern homes decor

PRODUCT RANGE

Branch Provider Units and Outdoor Units



Branch Provider (BP Unit)

Model Name	BPMKS967A2	BPMKS967A3
Number of Ports	2	3
Application	<ul style="list-style-type: none"> - Available in 2 or 3 port models - Installed in ceiling space - Enables quieter indoor unit operation as electronic expansion valves are located in the BP Unit 	

Note: All indoor units are required to be connected to a branch provider (excludes FXDYQ-MA, FXMQ-P & FXSQ-P)



Outdoor Units

Model Name	RXYMQ3AV4A	RXYMQ4AV4A	RXYMQ5AV4A
Class	3.5	4	5
Cooling Capacity	9.0kW	11.2kW	14.0kW
Heating Capacity	10.0kW	12.5kW	14.0kW
Power Supply	1-phase, 230-240 V, 50 Hz	1-phase, 230-240 V, 50 Hz	1-phase, 230-240 V, 50 Hz



Outdoor Units

Model Name	RXYMQ5PV4A	RXYMQ6AV4A	RXYMQ8AY1	RXYMQ9AY1
Class	5	6	8	9
Cooling Capacity	14.0kW	16.0kW	22.4kW	24.0kW
Heating Capacity	16.0kW	18.0kW	25.0kW	26.0kW
Power Supply	1-phase, 230-240 V, 50 Hz	1-phase, 230-240 V, 50 Hz	3-phase, 380-415 V, 50 Hz	3-phase, 380-415 V, 50 Hz

Note:

1. Indoor units come standard with a wireless remote controller, excludes FFQ-B, FXDYQ-MA, FXMQ-P & FXSQ-P; either a wired or wireless controller needs to be purchased separately
2. Individual indoor unit capacity output may vary depending on system configuration and operating conditions

Daikin's VRV-S wired controllers provide ultimate control of your indoor units to suit your lifestyle needs. Featuring intuitive interfaces for easy operation and a clean minimalistic design that is able to blend seamlessly into your home's decor.



CONTROLLERS

COMFORT AT YOUR FINGERTIPS

WIRED CONTROLLER



MODEL NO:
BRC1E62, BRC073A4

FEATURES

1. Clear, backlit display with easy-to-read text
2. Weekly schedule timer with maximum 5 actions per day
3. Holiday function select the days for which the schedule will be disabled
4. Set temperature limit, to predefine a temperature range for cooling or heating cycle, helping you reduce your energy consumption
5. Off Timer, programmable in 10 minute increments from 30 minutes to 180 minutes

Note:

1. KRP928BB2S adapter required for all indoor units (excludes FFQ-B, FXDYQ-MA, FXMQ-P & FXSQ-P) for compatibility with Central Controller (DCS303A51)
2. BRC1E62 for FFQ-B, FXDYQ-MA, FXMQ-P & FXSQ-P, all other indoor models use BRC073A4

CENTRAL CONTROLLER



MODEL NO:
DCS303A51

FEATURES

1. Backlit 5.5" LCD panel for easy readability
2. Controls up to 16 groups of indoor units
3. Each group has a dedicated button for convenience
4. ON/OFF, temperature settings and weekly/daily scheduling can be controlled for each individual indoor unit
5. All units can be turned on or off at once

FEATURES CHECKLIST INDOOR UNITS

		ZENA	WALL MOUNTED	BULKHEAD	CEILING MOUNTED	CEILING CONCEALED	FLOOR STANDING	SUSPENDED DUAL	COMPACT CASSETTE
COMFORTABLE AIRFLOW	Power-Airflow Dual Flaps	✓	✓						
	Wide-Angle Louvers	✓	✓				✓	✓	
	3D Airflow	✓	✓						
	Comfort Airflow Mode	✓	✓						
COMFORT CONTROL	Indoor Unit Quiet Operation	✓	✓	✓			✓	✓	
	Intelligent Eye		✓						
	2-Area Intelligent Eye	✓							
	Program Dry Function	✓	✓	✓	✓	✓	✓	✓	✓
LIFESTYLE CONVENIENCE	Auto Fan Speed	✓	✓	✓			✓	✓	
	Hot Start	✓	✓	✓	✓	✓	✓	✓	✓
	Econo Mode	✓	✓				✓		
	Inverter Powerful Operation	✓	✓	✓			✓	✓	
CLEAN-LINESS	Home Leave Operation			✓	✓	✓		✓	
	Backlit Wireless Remote Controller	✓	✓						
	Indoor Unit On/Off Switch	✓	✓	✓			✓	✓	
	Titanium Apatite Deodorising Filter	✓	✓						
TIMERS	Air-Purifying Filter						✓	✓	
	Wipe-Clean Flat Panel	✓	✓				✓		
	Filter Cleaning Indicator								✓
	24 Hour On/Off Timer	✓	✓	✓	✓	✓	✓	✓	
	72 Hour On/Off Timer								✓
	Weekly Timer	✓	✓		✓	✓	✓		
	Night Set Mode	✓	✓	✓			✓	✓	

SPECIFICATIONS OUTDOOR UNITS

MODEL		RXYMQ3AV4A	RXYMQ4AV4A	RXYMQ5AV4A	RXYMQ5PV4A	RXYMQ6AV4A	RXYMQ8AY1	RXYMQ9AY1	
Power Supply		1-phase, 230-240 V, 50 Hz					3-phase, 380-415 V, 50 Hz		
Cooling Capacity	kW	9.0	11.2	14.0	14.0	16.0	22.4	24.0	
Heating Capacity	kW	10.0	12.5	14.0	16.0	18.0	25.0	26.0	
Power Consumption	Cool/kW	2.44	2.88	3.93	3.97	4.14	5.94	6.88	
	Heat/kW	2.28	2.60	3.04	4.09	4.07	6.25	6.82	
Capacity Control		24 to 100%		16 to 100%	24 to 100%	16 to 100%	20 to 100%		
Compressor	Type	Hermetically sealed swing			Hermetically sealed scroll	Hermetically sealed swing	Hermetically sealed scroll		
	Airflow rate	L/s			1,267	1,767	2,333		
Dimensions (HxWxD)	mm	990x940x320			1,345x900x320		1,430x940x320		
Weight	kg	71		82	125	104	138		
Sound Level (Cool/Heat)	dB(A)	51/52	52/54	53/54	51/53	55/56	57/58	58/59	
Sound Power	dB(A)	69	70	71	69	73	75	76	
Operation Range	Cool/°CDB						-5 to 46		
	Heat/°CWB						-20 to 15.5		
Refrigerant	Type	R-410A							
	Charge/kg	2.9		3.4	4.0	3.6	5.8		
Piping Connections	Liquid/mm	Ø9.5 (Flare)					Ø9.5 (Brazing)		
	Gas/mm	Ø15.9 (Flare)					Ø19.1 (Flare)	Ø19.1 (Brazing)	Ø22.2 (Brazing)

Note:

1. Specifications are based on the following conditions:
Cooling: Indoor temp: 27°CDB, 19°CWB, Outdoor temp: 35°CDB, Equivalent piping length: 7.5m, Level difference: 0m
Heating: Indoor temp: 20°CDB, Outdoor temp: 7°CDB, 6°CWB, Equivalent piping length: 7.5m, Level difference: 0m
2. Sound level: Anechoic chamber conversion value, measured at a point 1m in front of the unit at a height of 1.5m and may differ once the unit is installed due to ambient conditions
3. For complete range of indoor units, specifications, features and piping schematic of the VRV-S product, please refer to Daikin's VRV IV-S Brochure

The specifications, designs and information in this brochure are subject to change without notice. Unit colours shown are as close as possible to actual unit colours. Colours depicted in this brochure may vary slightly.

ASSUMPTIONS

All representations made in Daikin marketing and promotional material are based on the assumptions that the correct equipment has been selected, appropriately sized and installed in accordance with Daikin's installation instructions and standard industry practices.

QUALITY CERTIFICATIONS

Daikin Industries Limited was the first air conditioning equipment manufacturer in Japan to receive ISO 9001 certification. All Daikin manufacturing facilities have been certified to ISO 9001 Quality Management System requirements. ISO 9001 is a certificate for quality assurance concerning 'design, development, manufacturing, installation and related service' of products manufactured at that factory.

ENVIRONMENTAL CERTIFICATIONS

Daikin Industries Limited has received ISO 14001 Environmental Certification for the Daikin production facilities listed below. ISO 14001 is an international standard specifying requirement for an environmental management system, enabling an organisation to formulate policy and objectives, taking into account legislative requirements and information about significant environmental impacts. It applies to those environmental aspects within the organisation's control and over which it can be expected to have an influence.

The certification relates only to the environmental management system and does not constitute any endorsement of the products shipped from the facility by the International Organisation for Standardisation.

Head Office /Tokyo Office
Shiga Plant (Japan)
Sakai Plant (Japan)
Daikin Industries Ltd (Thailand)
Yodogawa Plant (Japan)
Daikin Australia Pty. Ltd.

Certificate number: EC02J0355
Certificate number: EC99J2044
Certificate number: JOA-E-80009
Certificate number: JOA-E-90108
Certificate number: EC99J2057
Certificate number: CEM20437

**Daikin Australia Pty Limited
(ISO 9001)**
QEC 23256 May 12, 2006
Sydney, Brisbane, Adelaide,
Melbourne, Newcastle,
Townsville, Perth



**Daikin Australia Pty Limited
(ISO 14001)**
CEM 20437 October 27, 2006
Sydney, Brisbane, Adelaide,
Melbourne, Perth



**Residential Air Conditioning
Manufacturing Div (ISO 9001)**
JQA-0486 May 2, 1994
(Shiga Plant)

**Commercial Air Conditioning
and Refrigeration
Manufacturing Div (ISO 9001)**
JMI0107 December 28, 1992
(Kanaoka Factory and Rinkai
Factory at Sakai Plant)

**Industrial System and Chiller
Products Manufacturing Div
(ISO 9001)**
JQA-0495 May 16, 1994
(Yodogawa Plant and Kanaoka
Factory and Kishiwada Factory)

Daikin Europe N.V (ISO 9001)
Lloyd 928589.1 June 2, 1993

Daikin Industries (Thailand) Ltd
JQA-1452 September 13, 2002
(ISO 9001)



DEALER

For all sales enquires email:
sales@daikin.com.au

For customer service or technical support:
1300 368 300

daikin.com.au